

KCPA PDI Exhibition 2021

Instructions for sending PDI Exhibition images

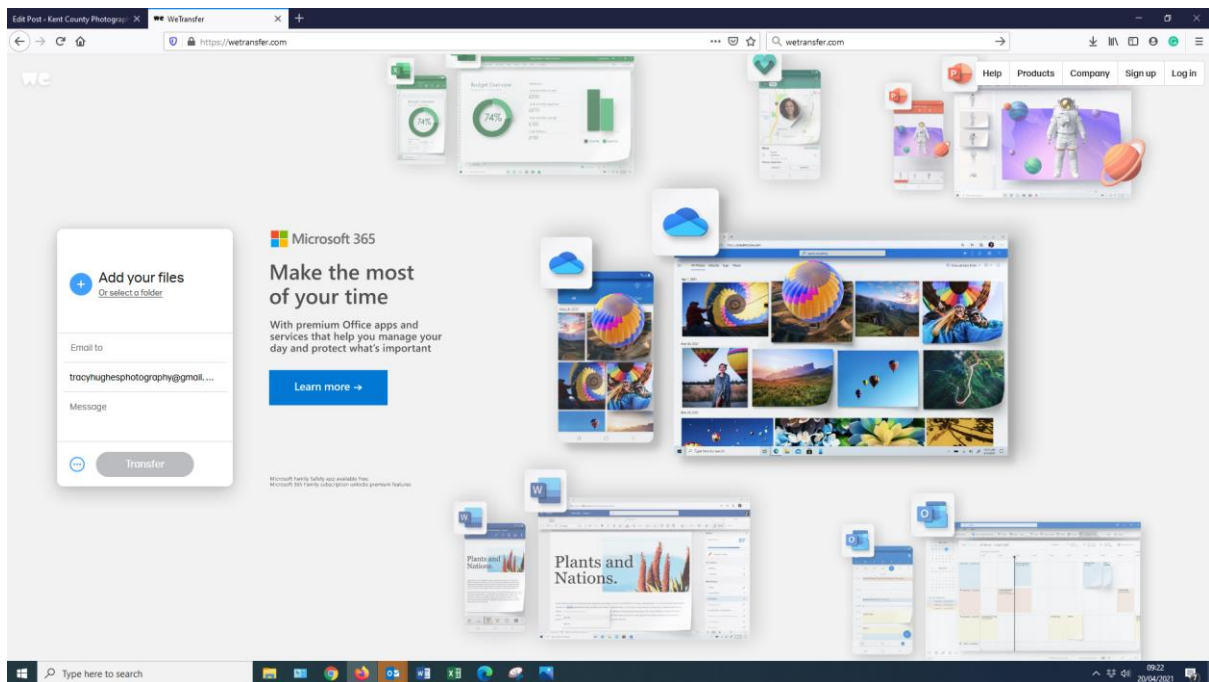
As in previous years, this year we are asking club members who enter the PDI exhibition to submit images via DVD, USB, or by using a free online service called Wettransfer.com

If submitting images via DVD ; Please ensure your images are added to a folder, on the disk which should be titled with your name.

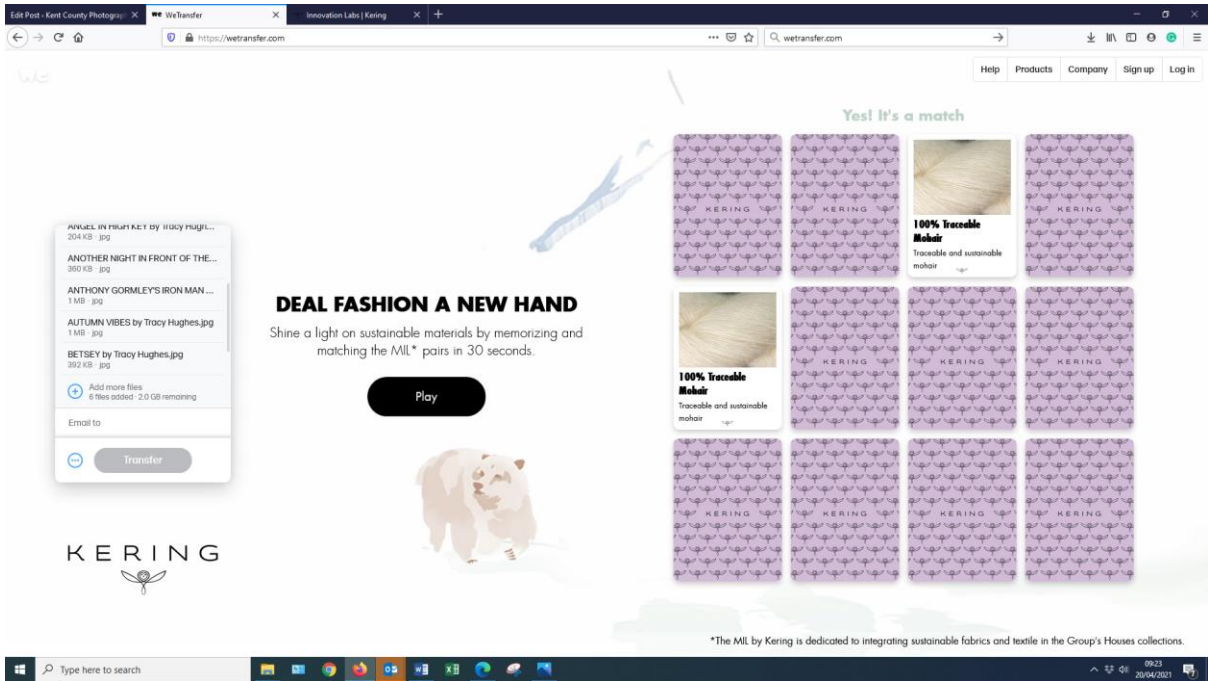
If submitting images via we transfer, please follow the instructions below ;

Once you click on the website you will get a panel on the left hand side which enables you to add the images you wish to send

Where is says Add you files either click to add all the images you wish to enter.

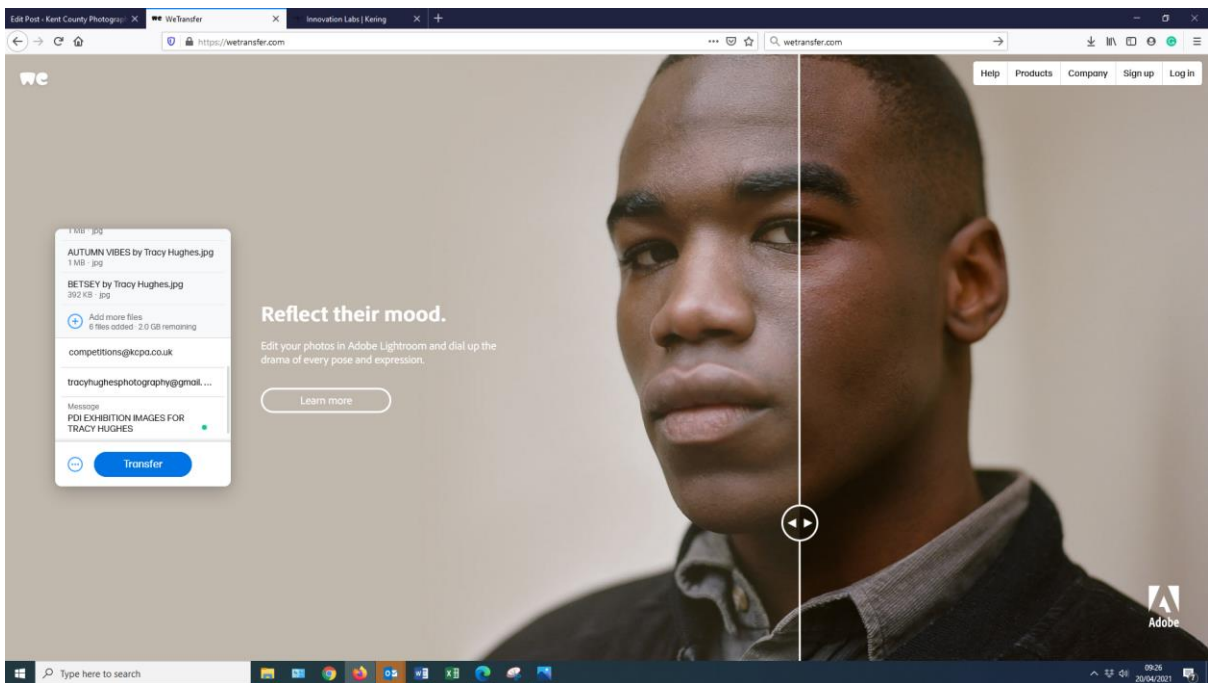


You will then see your images titles in the LHS panel as below;

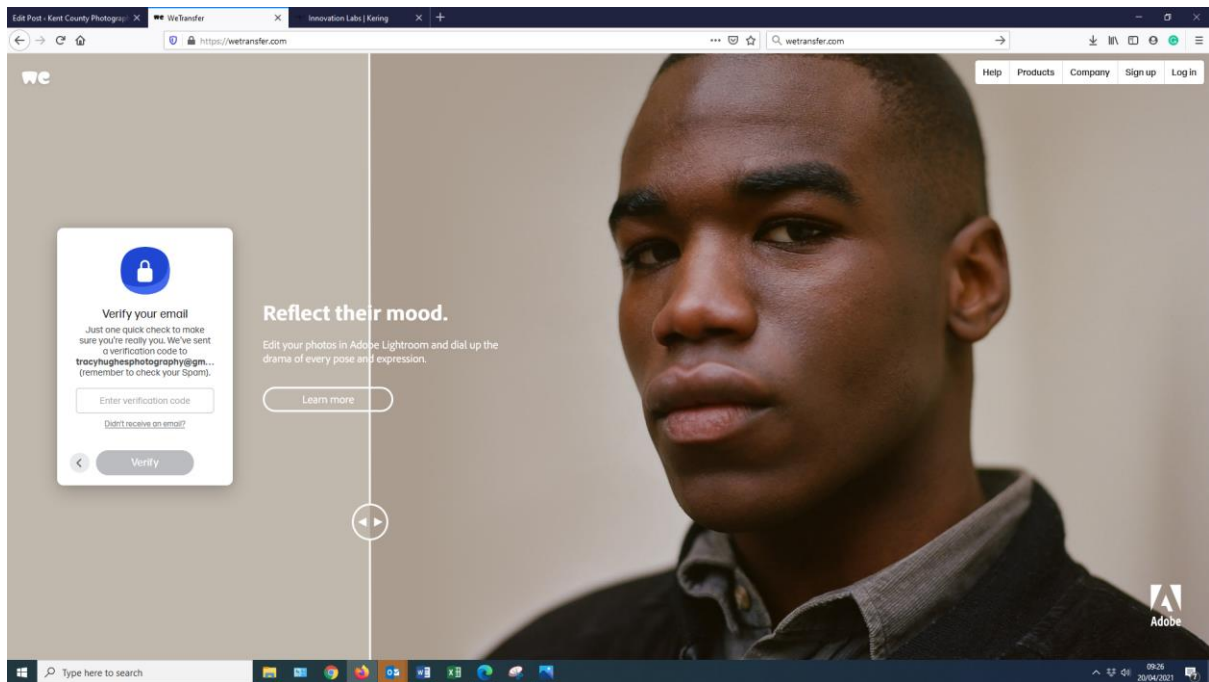


Type into the email address the address to send your images competitions@kcpa.co.uk

In the message box Type In PDI Exhibition images TYPE YOUR NAME



Next stage - Click on transfer, you will then be asked to Verify you're not a robot, you will find the code emailed to yourself, in the box below type in the code sent to your inbox and click on Verify



After the images have been transferred to the competitions@kcpa.co.uk email address you will receive an email informing you this has been done.

Files sent to
competitions@kcpa.co.uk

6 items, 4.1 MB in total • Expires on 27 April, 2021

Thanks for using WeTransfer. We'll email you a confirmation as soon as your files have been downloaded.

As well as sending your images don't forget to send your KCPA Entry form over!

Best of Luck